

ABOUT THE GREEN LINE

Planned to open in early 2028, the VIA Rapid Green Line is designed to serve more riders more efficiently and improve service reliability along one of the city's busiest travel corridors. The Green Line will run north and south along San Pedro Avenue, from the San Antonio International Airport to downtown, and on to Brooks Transit Center.

The project construction limit for the Green Line is U.S. 281 and Isom Road to Roosevelt Avenue and Steves Avenue in the south.



EAGLELAND DETOUR

TIMELINE: May 28 - August 12, 2026
(subject to change)

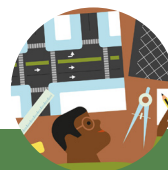
As a result of road construction on Eagleland, traffic will be detoured in the area. Please be aware of the following:

- Use precaution when parking on Biering, Lotus and Claudia roadways, residents may want to park in their driveways as much as possible.
- General traffic flow will be directed in these streets to include 11' wide buses regularly traveling. We want to make sure residents are aware for safety purposes.
- Posted No Parking signage will be enforced.
- Awareness for parking on the corners of the street (opposite way of the stop sign) to maintain bus turning radius.



St. Mary's & Eagleland Closure Detour

- VIA bus stop
- Temporary stop closure
- Permanent stop closure
- ➡ Northbound detour
- ➡ Southbound detour
- Full intersection closure



For more information about the Green Line and office hours, visit KeepSAMoving.com/construction or contact us at KeepSAMoving@viainfo.net

INFORMATION IS CURRENT AS OF MAY 2026