



Month Day, Year

VIA Rapid Silver Line

ENGAGEMENT ACTIVITY UPDATE



Hello and welcome to a Community Conversation about the proposed VIA Rapid Silver Line, an Advanced Rapid Transit project designed to move more people faster and farther.

We appreciate your interest and thank you for your participation.

This is a pre-recorded presentation to provide an overview of the proposed project.

Additional project information, including this presentation, can be found at [KeepSAMoving.com](https://www.KeepSAMoving.com) as of Wednesday, September 11, 2024.



AGENDA

VIA is moving more people faster and farther with Advanced Rapid Transit

Today, we'll discuss:

- Advanced Rapid Transit service
- Proposed VIA Rapid Silver Line and the proposed station locations
- How to provide your comments

2

VIA Rapid Silver Line is a key initiative under the Keep SA Moving plan and it responds to San Antonio's growing transportation needs, embodying our commitment to enhancing regional mobility.

This presentation will provide an overview of the project, a review of the proposed improvements, and how you can provide input. At the end of the presentation, there are instructions on how to submit questions and comments. To be included in the official meeting record, comments must be received or postmarked by Wednesday, October 2, 2024.

Your comments are an important part of this process, and the project team will consider them for project refinements where feasible. You are encouraged to talk to your neighbors and refer them to VIA so they can also make comments and be included in this process. Let's get started!



WHAT IS ADVANCED RAPID TRANSIT

Advanced Rapid Transit, or ART, is a high-quality, modern public transportation system that is designed to move more people faster and farther.

VIA Rapid is VIA's new **Advanced Rapid Transit** service that **will provide frequent, reliable and safe transportation options** for a growing San Antonio region.

VIA Rapid is part of VIA's family of transportation services, including bus, VIAtrans, VIA Link and **the new VIA Rapid Green Line**—the first VIA Rapid corridor that will operate north to south along San Pedro Avenue. The Silver Line is proposed as the second Rapid corridor.

3

We're often asked, "what is Advanced Rapid Transit?"

Advanced Rapid Transit, or A.R.T., is a key initiative under the Keep SA Moving plan, designed to help meet growing transportation needs as part of VIA's commitment to improve transit in our region.

It's a high quality, modern public transportation system that is designed to get more people to more places in less time.

"VIA Rapid" is the new Advanced Rapid Transit service for our region that will provide frequent, reliable, and safe transportation options for a growing city.

VIA Rapid is part of a network of VIA services that includes fixed-route bus, Primo, VIA Link, VIAtrans, the VIA Rapid Green Line (running north to south) and proposed Silver Line (running east to west).



BENEFITS OF VIA RAPID SERVICE



Saves time



Simplifies trips



Improving the
experience

4

VIA Rapid will save time, simplify trips, and improve the overall transit experience. VIA Rapid addresses our region's evolving transportation demands. It is a strategic response to move more people efficiently, aligning with the Keep SA Moving plan's goals. This initiative represents a significant advancement in our public transportation system, catering to San Antonio's growth and improving travel experiences for every resident.



WHAT ARE THE FEATURES OF VIA RAPID?



- Planned 10-minute service on weekdays
- Planned 15-minute service on weekends
- Bus-friendly traffic signals
- Bus priority traffic lanes
- Level boarding with wheelchair access
- Pre-pay for faster boarding times

5

The VIA Rapid Silver Line prioritizes time efficiency with features like 'pay before you board' and 'bus-friendly traffic signals,' offering planned, level boarding with wheelchair access, reliable 10-minute weekday and 15-minute weekend service. These features are key to reducing commute times and enhancing the transit experience for our community.



BENEFITS TO THE COMMUNITY



Makes better connections to schools and training



Helps with traffic flow



Provides safer travel



Improves air quality



Supports jobs and businesses



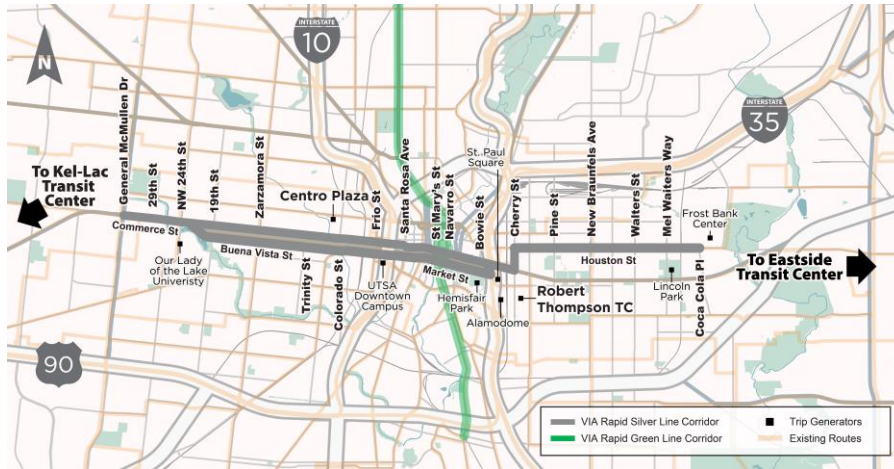
Makes better connections to goods/ services

6

Community Benefits of VIA Rapid include:

- Making better connections to schools and training
- Helping to improve traffic flow
- Improved safety along the corridor
- Reduced greenhouse gas emissions for cleaner air
- Helps support local jobs and businesses
- Easier access to key destinations and daily needs

WHERE IS THE PROPOSED VIA RAPID SILVER LINE?



7

The VIA Rapid Silver Line would move more people living, working and traveling on the city's East and West sides faster and farther.

The proposed project is designed to offer riders frequent, reliable transit service with new, convenient stations, simple payment options and quicker, easier boarding.

The proposed corridor would run east to west through Market Downtown, from just west of Our Lady of the Lake University to the Frost Bank Center.



WHY IS THE PROPOSED SILVER LINE NEEDED?

Estimated Growth
Bexar County (2020-2045)



Estimated Growth
Silver Line Corridor (2020-2050):



*Source: AAMPO, Mobility 2050, 2045, 2019
Calculated based on population and employment estimates within 1/2 mile of potential station areas using Transportation Analysis Zone data from AAMPO's travel demand forecasting model.

San Antonio is growing like never before. Bexar County could see **more than 900,000 new residents by 2045**, commuting to **more than 560,000 new jobs**. The areas immediately around the proposed Silver Line could see **34,000 new residents and 40,000 new jobs**.

The Silver Line will expand transportation choices along the East and West sides of San Antonio, **connecting people to jobs, families, education, recreation, shopping, medical care, and more.**

You might ask, “Why do we need the VIA Rapid Silver Line?”


1. TO GROW WITH OUR COMMUNITY

Fast, frequent, reliable public transit options are needed to help us keep up with expected population and job growth.

Between 2020 and 2045, Bexar County's population is anticipated to grow by 44%. In addition, the area along the proposed Silver Line corridor is expected to experience a 51% increase in population by 2050.

Job growth in these areas, including both Bexar County and the Silver Line Corridor, is also projected to see significant increases, with double-digit percentage growth anticipated from 2020 to 2050. We need a transit system that moves more people safely and reliably.

By offering better transportation choices, we can continue growing and connect people to jobs, education, training, medical care and other essentials of daily life.



ENVIRONMENTAL STUDIES BY VIA IN PROGRESS

These are the social, economic and environmental resources being studied:

- Historical and archaeological resources
- Community impacts and environmental justice
- Hazardous materials
- Biological resources
- Water resources (Wetlands)
- Noise and air quality
- Land use and park land

Environmental constraints are key areas to assess and avoid, if possible, when planning improvements. Please see the interactive environmental map.

9

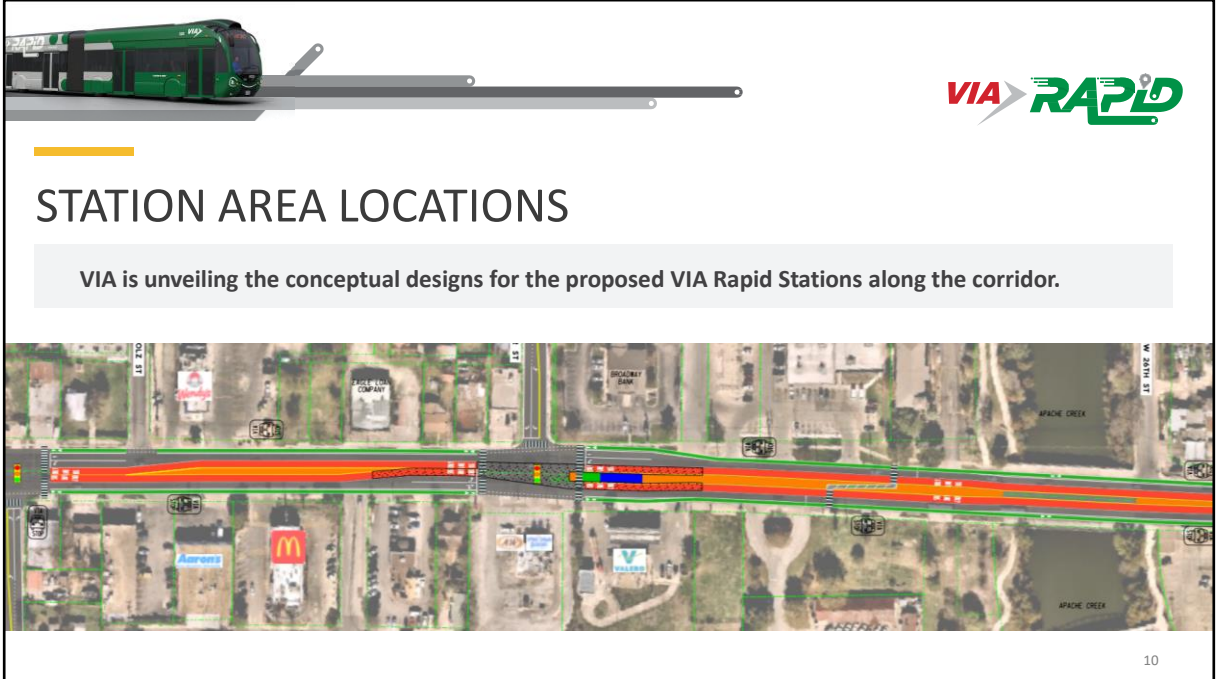
Because the VIA Rapid projects are funded with federal dollars, VIA is required to evaluate the potential impacts to the human and natural environment that could result from the proposed project and provide opportunities for the public to provide input.

The environmental review process we follow is in accordance with the National Environmental Policy Act of 1969, otherwise known as NEPA.

This federally required process helps decision-makers and the public make an informed decision on how to proceed with the proposed project. Two major purposes of the NEPA process are better informed decisions and community involvement.

Part of the process is to evaluate environmental resources in the study area and to assess the potential impacts. We look at things like water resources, traffic noise, vegetation and wildlife, and social and community impacts.

We encourage you to look at our environmental constraints map as part of the exhibits at the community conversation meetings. Environmental constraints are key areas that we need to assess and avoid, if possible, when planning improvements.



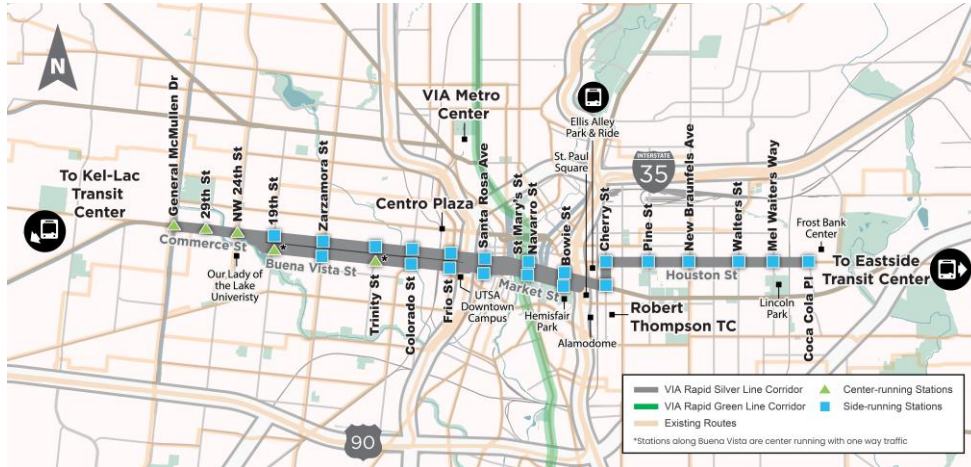
VIA is unveiling the conceptual designs for the proposed VIA Rapid Stations along the corridor.

Maps like these, called “Roll Plots” are available online at KeepSAMoving.com and in print at upcoming community meetings for your review.

This close-up shows one section of the proposed corridor, which includes the intersection of General McMullen and W. Commerce St. In these maps you can see the area location of the proposed stations and their proximity to shops, homes, and other points of interest in the surrounding area.

VIA team members are available to review these maps with you. Call us at 210-362-2590 for help using these roll plots.

WHERE ARE THE PROPOSED STATIONS?



The information shown is for illustrative purposes only and is subject to change. As the project progresses through development, it will include further details that will reflect public and stakeholder input and studies conducted during the environmental process.

11

There are 26 new station locations proposed for the VIA Rapid Silver Line. A portion of the corridor will follow along one-way routes along Commerce and Buena Vista. You can see on the map which stations will be located in the center of the road, also known as “center-running” and which stations will be located along the curb, also known as “curb-running” stations.



STATION LOCATION DESIGN CONSIDERATIONS



Locate and design station platform to maximize safety for riders and other pedestrians.



Place stations on far side of intersection to allow for faster, more reliable trip times.



Place stations near key destinations attractive to riders such as jobs, educational opportunities, health care and goods and services.



Place stations near transportation connections and design to take advantage of trails and intersecting local bus service.

12

VIA has taken into consideration these best practices when selecting the proposed station locations along the VIA Rapid Silver Line corridor.

- Locate and design station platform to maximize safety for riders and other pedestrians.
- Place stations on far side of intersection to allow for faster, more reliable trip times.
- Place stations near key destinations attractive to riders such as jobs, educational opportunities, health care and goods and services.
- Place stations near transportation connections and design to take advantage of trails and intersecting local bus service.



STATION LOCATION DESIGN CONSIDERATIONS



Design stations that complement the community's needs and environment.



Minimize right-of-way impacts.



Avoid driveways, traffic signals, and other potential conflicts.



Avoid impacts to environmental features such as historic properties and parks.

13

- Design stations that compliment the community's needs and environment.
- Minimize right-of-way impacts.
- Avoid driveways, traffic signals, and other potential conflicts.
- Avoid impacts to environmental features such as historic properties and parks.

WHAT ARE THE PROPOSED LANE TYPES?



The information shown is for illustrative purposes only and is subject to change. As the project progresses through development, it will include further details that will reflect public and stakeholder input and studies conducted during the environmental process.

14

There are three proposed lane types along the VIA Rapid Silver Line. Looking from West to East, the route begins with dedicated, center-running lanes that are for buses only, shown here in dark green. Light green shows dedicated lanes that run along the curb, known as business access and transit lanes. Shown in blue are mixed use lanes, meaning the bus travels in the same lanes as other vehicles.

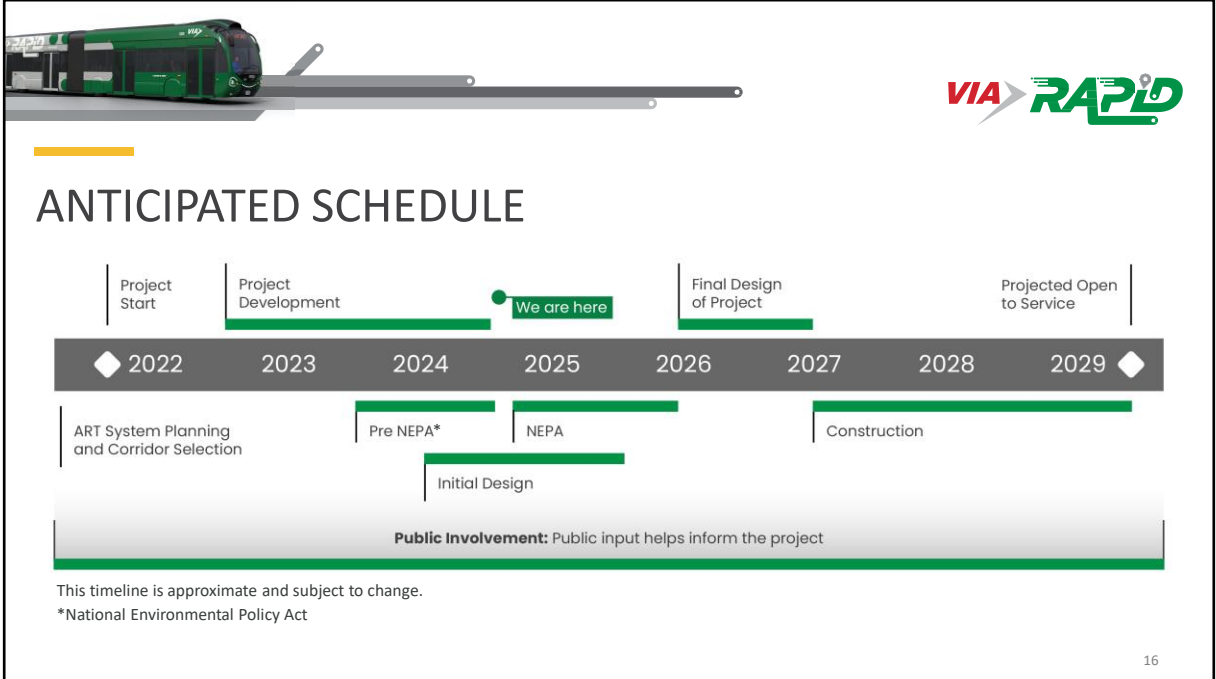
WHAT WOULD THESE STATIONS LOOK LIKE?



Station view examples by lane type are shown here. These station renderings are conceptual and reflect potential station types planned for the VIA Rapid Green Line corridor. The exact location and design for the proposed Silver Line stations are in development.

- | | | |
|--|---|--|
| <p>1</p> <p>Example of side-running station with bus only lanes</p> | <p>2</p> <p>Example of side-running station with mixed traffic lanes</p> | <p>3</p> <p>Example of center-running station with bus only lanes</p> |
|--|---|--|

Station view examples by lane type are shown here. These station renderings are conceptual and reflect potential station types planned for the VIA Rapid Green Line corridor. The exact location and design for the proposed Silver Line stations are in development.



The process to identify, evaluate, approve, and implement the VIA Rapid Silver Line requires several steps and will last several years.

The development of this proposed project is marked by extensive community involvement which is fundamental to each phase.

First, we PLAN. VIA is in the process of project development and environmental study, and we expect this phase to conclude in 2025.


In DESIGN, VIA will advance to final design from 2025 to 2026 in order to get ready for construction.

Additional activity occurs such as right-of-way acquisition and utility adjustments.

Finally, CONSTRUCTION. Construction can take up to three years for completion, and we anticipate a project opening date as early as 2029 if the project gain public support and environmental approval. Please note that funding for construction still needs to be identified.

Let's continue to have conversations about this project and how it could change the way we move in San Antonio.

As the project progresses through development and implementation, VIA will continue to engage with the community and request your input as the project is further defined.



VIA RAPID


We need your input:

- What do you like about the proposed project?
- What concerns do you have about the proposed project?

17

We have a series of questions to ask you as noted on the screen and you can give us your feedback at our in-person community conversations meetings or online at KeepSAMoving.com.

VIA is committed to developing this project in collaboration with the community, in a way that meets project goals and considers community needs and priorities.





HOW TO COMMENT

Comment form
Submit a comment form in-person at the meeting

Online
Submit a comment form online.
KeepSAMoving.com/via-rapid-silver-line/


Email
Submit a comment by email to KeepSAMoving@viainfo.net



Mail
Submit a comment by US mail to:

Attn:
VIA Rapid Silver Line Project

c/o:
Government and Community Relations
7067 San Pedro Avenue
San Antonio, TX 78216



To be included in the official public meeting summary document, all comments must be received or postmarked by **Wednesday, October 2, 2024**

18

Your comments are important. You can submit them in a few ways:

- Fill out a comment form at an in-person community meeting.
- Submit an online comment form at KeepSAMoving.com.
- Send an email to KeepSAMoving@viainfo.net.
- Mail your comments to 7067 San Pedro Avenue. San Antonio, Texas 78216.

Please note, all comments must be received or postmarked by Wednesday, October 2, 2024, to be included in the official meeting record. Remember, your input helps us better understand your values and concerns.

Comments are not a vote, but what you provide helps inform the project.

QUESTIONS?



Call: 210-362-2590



Email: KeepSAMoving@viainfo.net



THANK YOU FOR YOUR TIME.
VIAINFO.NET

19

The VIA Rapid Silver Line, part of the Keep SA Moving plan, is set to transform San Antonio's transit landscape.

You can learn more and sign up for updates at KeepSAMoving.com.

Your feedback is important as we move toward finalizing this project and securing funding.

We appreciate your time today and encourage you to participate and stay engaged.

This concludes our presentation. Thank you.